

**BALDOR® • RELIANCE** 

**Product Information Packet**

**M1005T**

**1.5/.38HP, 1725/850RPM, 3PH, 60HZ, 145T, 3524**

Part Detail							
Revision:	L	Status:	PRD/A	Change #:		Proprietary:	No
Type:	AC	Elec. Spec:	35WGX011	CD Diagram:	CD0032	Mfg Plant:	
Mech. Spec:	35BB001	Layout:	35LYBB001	Poles:	04/08	Created Date:	12-22-2009
Base:	RG	Eff. Date:	08-21-2017	Leads:	6#18		

Specs			
Catalog Number:	M1005T	Heater Indicator:	No Heater
Enclosure:	OPEN	Insulation Class:	F
Frame:	145T	Inverter Code:	Not Inverter
Frame Material:	Steel	KVA Code:	F
Output @ Frequency:	1.500 HP @ 60 HZ	Lifting Lugs:	No Lifting Lugs
	.380 HP @ 60 HZ	Locked Bearing Indicator:	No Locked Bearing
Synchronous Speed @ Frequency:	1800 RPM @ 60 HZ	Motor Lead Quantity/Wire Size:	6 @ 18 AWG
Voltage @ Frequency:	208.0 V @ 60 HZ	Motor Lead Exit:	Ko Box
	230.0 V @ 60 HZ	Motor Lead Termination:	Flying Leads
XP Class and Group:	None	Motor Type:	3524M
XP Division:	Not Applicable	Mounting Arrangement:	F1
Agency Approvals:	UR	Product Family:	General Purpose
	CSA	Pulley End Bearing Type:	Ball
Auxillary Box:	No Auxillary Box	Pulley Face Code:	Standard
Auxillary Box Lead Termination:	None	Pulley Shaft Indicator:	Standard
Base Indicator:	Rigid	Rodent Screen:	None
Bearing Grease Type:	Polyrex EM (-20F +300F)	Shaft Extension Location:	Pulley End
Blower:	None	Shaft Ground Indicator:	No Shaft Grounding

<b>Current @ Voltage:</b>	1.800 A @ 230.0 V	<b>Shaft Rotation:</b>	Reversible
	4.400 A @ 208.0 V	<b>Shaft Slinger Indicator:</b>	No Slinger
<b>Design Code:</b>	B	<b>Speed Code:</b>	2S-1W-VT
<b>Drip Cover:</b>	No Drip Cover	<b>Motor Standards:</b>	NEMA
<b>Duty Rating:</b>	CONT	<b>Starting Method:</b>	Direct on line
<b>Electrically Isolated Bearing:</b>	Not Electrically Isolated	<b>Thermal Device - Bearing:</b>	None
<b>Feedback Device:</b>	NO FEEDBACK	<b>Thermal Device - Winding:</b>	None
<b>Front Face Code:</b>	Standard	<b>Vibration Sensor Indicator:</b>	No Vibration Sensor
<b>Front Shaft Indicator:</b>	None	<b>Winding Thermal 1:</b>	None
		<b>Winding Thermal 2:</b>	None

Nameplate NP1256L										
CAT.NO.	M1005T									
SPEC.	35BB001X011									
HP	1.5/.38									
VOLTS	208-230									
AMP	4.4/1.8									
RPM	1725/850									
FRAME	145T				HZ	60			PH	3
SER.F.	1.15		CODE	F	DES	B		CLASS	F	
NEMA-NOM-EFF			PF							
RATING	40C AMB-CONT									
CC									USABLE AT 208V	
DE	6205				ODE	6203				
ENCL	OPEN		SN							

Parts List		
Part Number	Description	Quantity
SA189004	SA 35BB001X011	1.000 EA
RA176723	RA 35BB001X011	1.000 EA
NS2512A01	INSULATOR, CONDUIT BOX X	1.000 EA
35CB3009	35 CB W/1.09 DIA. LEAD HOLE @ 6:	1.000 EA
51XB1016A07	10-16 X 7/16 HXWSSLD SERTYB	2.000 EA
11XW1032G06	10-32 X .38, TAPTITE II, HEX WSHR SLTD U	1.000 EA
35EP3209A00	MASTER ODE,203 BRG,GRSR	1.000 EA
HW4500A01	1641B(ALEMITE)400 UNIV, GREASE FITT	1.000 EA
HW5100A03	WAVY WASHER (W1543-017)	1.000 EA
35EP3210A00	MASTER DE,205 BRG,1.000SH,GRSR	1.000 EA
HW4500A01	1641B(ALEMITE)400 UNIV, GREASE FITT	1.000 EA
XY1032A02	10-32 HEX NUT DIRECTIONAL SERRATION	4.000 EA
35CB4521	35 LIPPED CB LID (GALV & PHOSPH)	1.000 EA
51XW0832A07	8-32 X .44, TAPTITE II, HEX WSHR SLTD SE	4.000 EA
HW2501D13	KEY, 3/16 SQ X 1.375	1.000 EA
HA7000A01	KEY RETAINER 7/8" DIA SHAFT	1.000 EA
85XU0407S04	4X1/4 U DRIVE PIN STAINLESS	2.000 EA
MJ1000A02	GREASE, MOBIL POLYREX EM - 124047	0.050 LB
MG1000G27	MED CHARCOAL METALLIC GREY 400-0096	0.017 GA
HA3100A18	THRUBOLT 10-32 X 9.250	4.000 EA
LB1119N	WARNING LABEL	1.000 EA
LC0032	CONNECTION LABEL	1.000 EA
NP1256L	ALUM UL CSA CC INDUSTRIAL MOTOR A60	1.000 EA
35PA1066	PKG GRP, PRINT PK1008A06	1.000 EA

<b>Parts List (continued)</b>		
<b>Part Number</b>	<b>Description</b>	<b>Quantity</b>
MN416A01	TAG-INSTAL-MAINT no wire (1200/bx) 3/19	1.000 EA
PE-0000001	ZRTG PE ASSEMBLY	1.000 EA
FE-0000001	ZRTG FE ASSEMBLY	1.000 EA

<b>Accessories</b>		
<b>Part Number</b>	<b>Description</b>	<b>Multiplier</b>
35-8764	C FACE KIT	A8
35EP1604A01SP	D-FLANGE KIT	

**AC Induction Motor Performance Data**

Record # 61505 - Typical performance - not guaranteed values

<b>Winding:</b> 35WGX011-R002	<b>Type:</b> 3524M	<b>Enclosure:</b> OPEN
-------------------------------	--------------------	------------------------

Nameplate Data				230 V, 60 Hz: High Speed Connection	
Rated Output (HP)	1.5/.38			Full Load Torque	4.5 LB-FT
Volts	208-230			Start Configuration	direct on line
Full Load Amps	4.4/1.8			Breakdown Torque	15 LB-FT
R.P.M.	1725/850			Pull-up Torque	9 LB-FT
Hz	60	Phase	3	Locked-rotor Torque	11 LB-FT
NEMA Design Code	B	KVA Code	F	Starting Current	26.5 A
Service Factor (S.F.)	1.15			No-load Current	2.5 A
NEMA Nom. Eff.	0	Power Factor	0	Line-line Res. @ 25°C	4.44 Ω
Rating - Duty	40C AMB-CONT			Temp. Rise @ Rated Load	46°C
S.F. Amps				Temp. Rise @ S.F. Load	55°C
				Locked-rotor Power Factor	78.4
				Rotor inertia	0.142 LB-FT <sup>2</sup>

Load Characteristics 230 V, 60 Hz, 1.5 HP

% of Rated Load	25	50	75	100	125	150	S.F.
Power Factor	39	59	72	78	83	86	81
Efficiency	68.5	77.6	79.5	78.6	76.6	73.6	77.4
Speed	1784	1767	1748	1726	1702	1674	1712
Line amperes	2.7	3.1	3.7	4.5	5.4	6.4	5.04

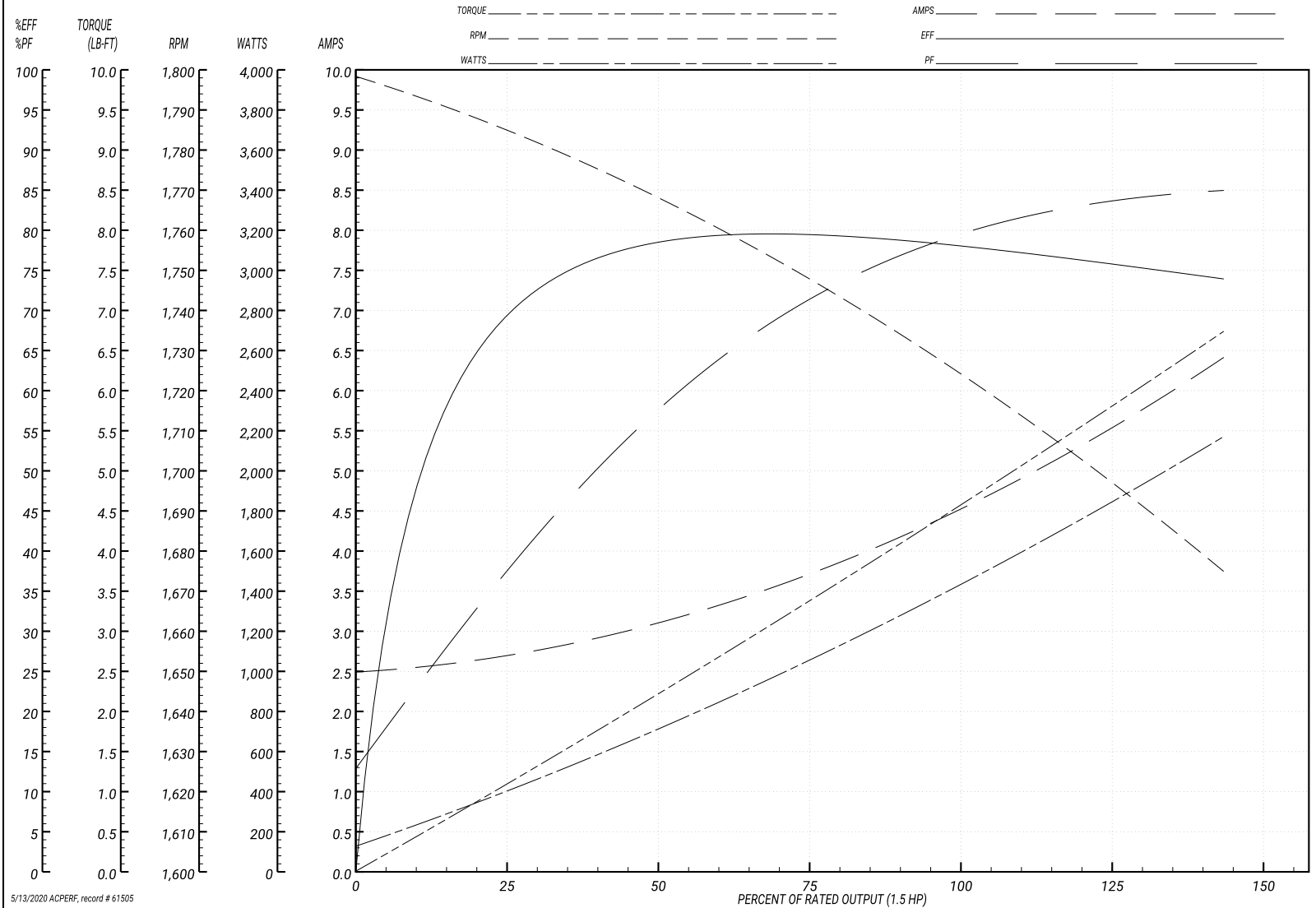
Performance Graph at 230V, 60Hz, 1.5HP Typical performance - Not guaranteed values

ABB Motors and Mechanical Inc.

WINDING # 35WGX011

Typical performance - not guaranteed values.

1.5 HP 3 PH 60 HZ 1726 RPM 230 V 3524M  
 TORQUES(LB-FT): PO=15 PU=9 LR=11 LRA=26.5



5/13/2020 ACPERF, record # 61505

**AC Induction Motor Performance Data**

Record # 61506 - Typical performance - not guaranteed values

<b>Winding:</b> 35WGX011-R002	<b>Type:</b> 3524M	<b>Enclosure:</b> OPEN
-------------------------------	--------------------	------------------------

Nameplate Data				230 V, 60 Hz: Low Speed Connection	
Rated Output (HP)	1.5/.38			Full Load Torque	2.3 LB-FT
Volts	208-230			Start Configuration	direct on line
Full Load Amps	4.4/1.8			Breakdown Torque	6.5 LB-FT
R.P.M.	1725/850			Pull-up Torque	3.7 LB-FT
Hz	60	Phase	3	Locked-rotor Torque	4.2 LB-FT
NEMA Design Code	B	KVA Code	F	Starting Current	6.9 A
Service Factor (S.F.)	1.15			No-load Current	1.7 A
NEMA Nom. Eff.	0	Power Factor	0	Line-line Res. @ 25°C	17.7 Ω
Rating - Duty	40C AMB-CONT			Temp. Rise @ Rated Load	51°C
S.F. Amps				Temp. Rise @ S.F. Load	57°C
				Locked-rotor Power Factor	71.8
				Rotor inertia	0.142 LB-FT <sup>2</sup>

Load Characteristics 230 V, 60 Hz, 0.38 HP

% of Rated Load	25	50	75	100	125	150	S.F.
Power Factor	25	36	46	55	63	67	60
Efficiency	43.2	56.1	60.9	63.1	62.7	60.8	62.9
Speed	889	879	868	854	842	825	847
Line amperes	1.7	1.8	1.9	2	2.2	2.5	2.12

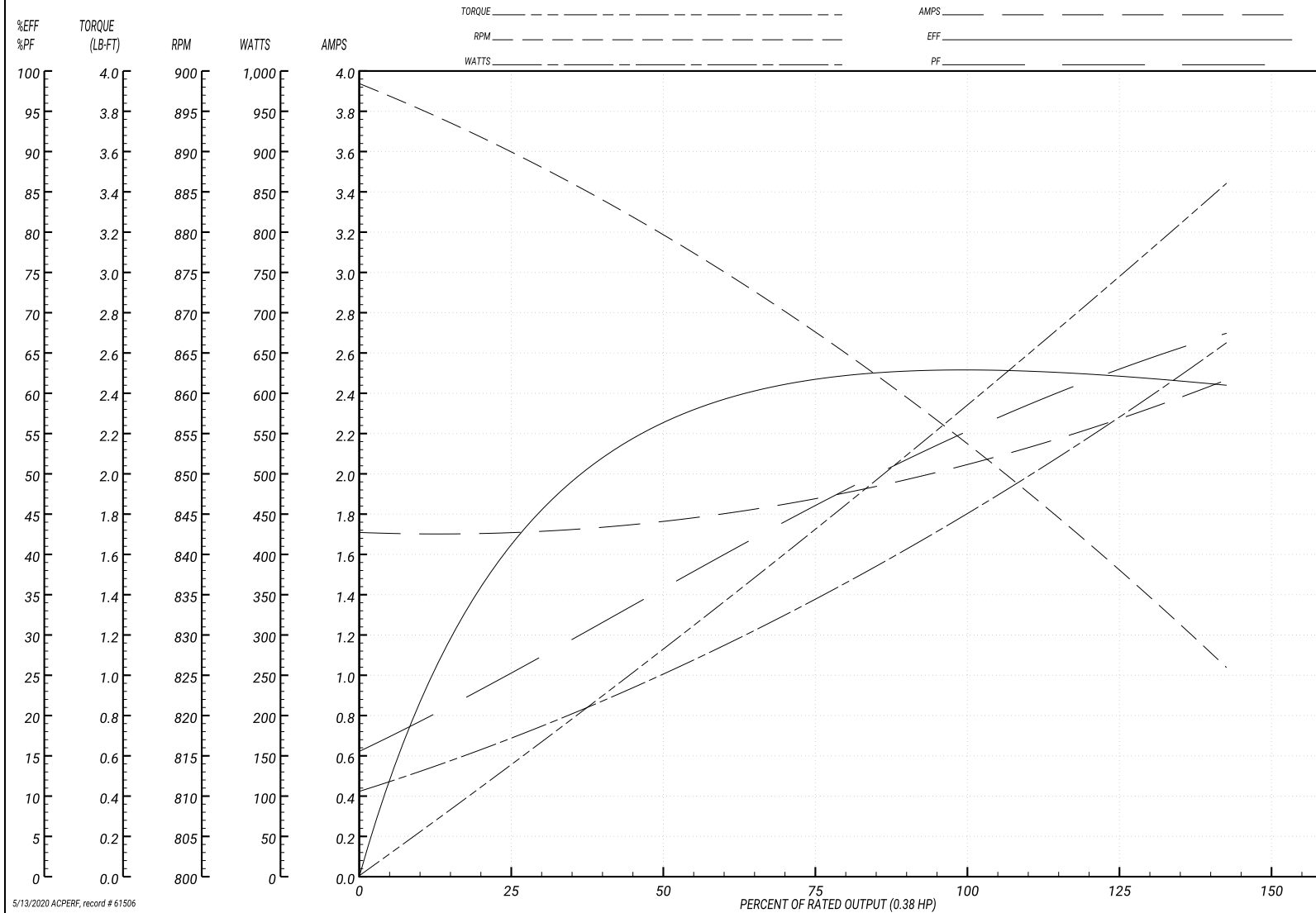
Performance Graph at 230V, 60Hz, 0.38HP Typical performance - Not guaranteed values

ABB Motors and Mechanical Inc.

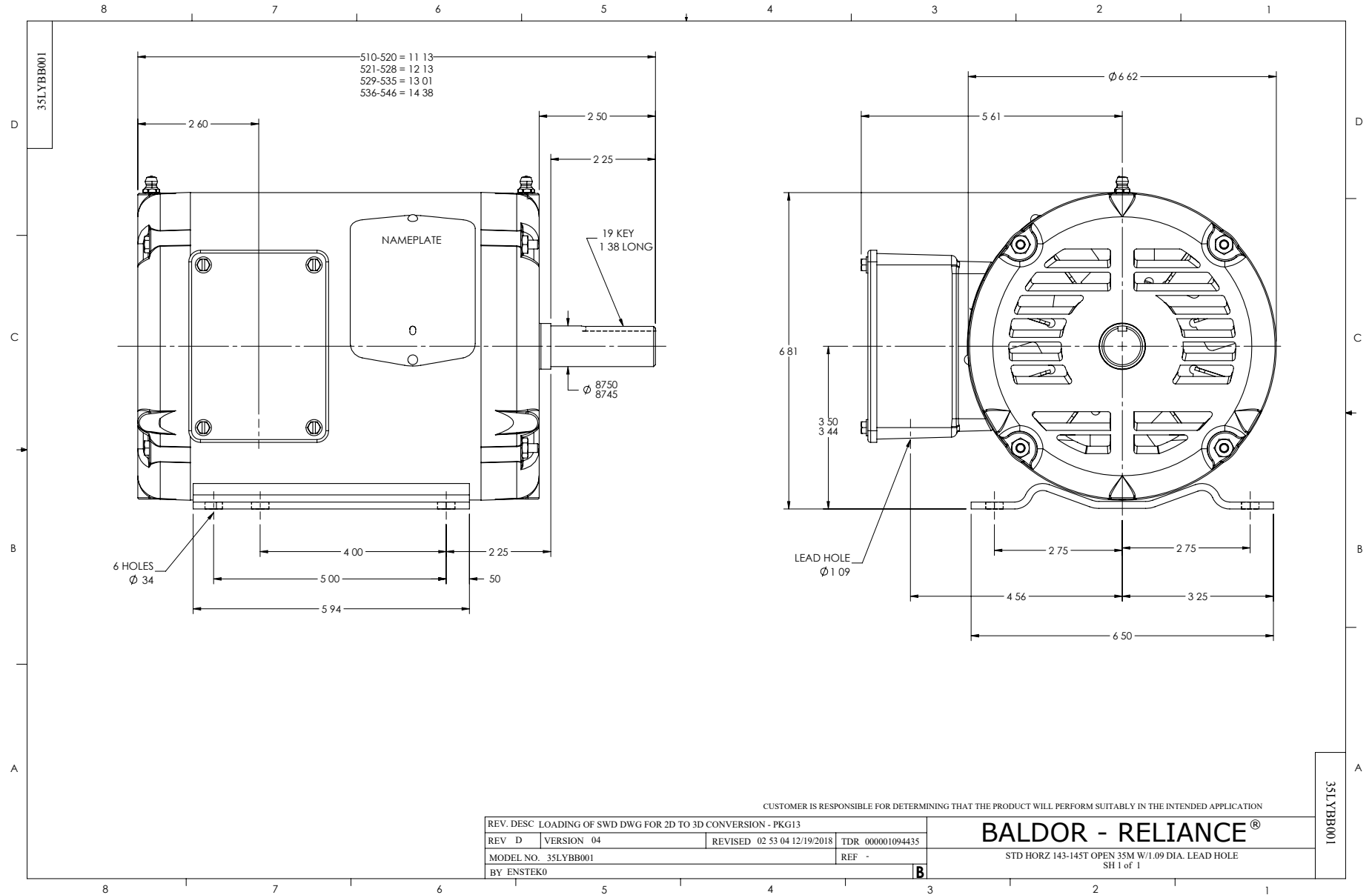
WINDING # 35WGX011

Typical performance - not guaranteed values.

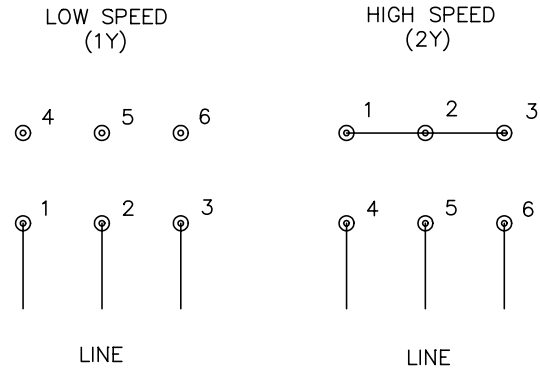
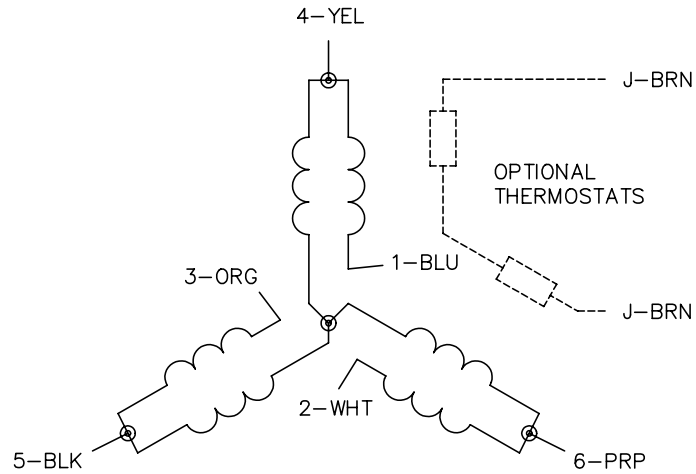
0.38 HP 3 PH 60 HZ 854 RPM 230 V 3524M  
 TORQUES(LB-FT): PO=6.5 PU=3.7 LR=4.2 LRA=6.9



5/13/2020 ACPERF, record # 61506



CD0032



NOTES:

1. INTERCHANGE ANY TWO LINE LEADS TO REVERSE ROTATION.
2. OPTIONAL THERMOSTATS ARE PROVIDED WHEN SPECIFIED.
3. ACTUAL NUMBER OF INTERNAL PARALLEL CIRCUITS MAY BE A MULTIPLE OF THOSE SHOWN ABOVE.
4. LEAD COLORS ARE OPTIONAL. LEADS MUST ALWAYS BE NUMBERED AS SHOWN.

REV. DESC: REVISE TO SHOW OPTIONAL COLORS			
REV. LTR: E	BY: JLP	REVISED: 01/22/99 8:27	TDR: 0171435
CD0032		FILE: AAA00005145	MDL: -
		MTL: -	

**BALDOR ELECTRIC Co.**

3PH, SV, 6 LEADS, 2-SPEED 1-WINDING VARIABLE TORQUE

CD0032